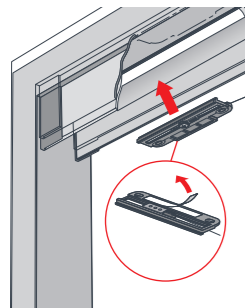


DOUBLE DOOR INSTALLATION

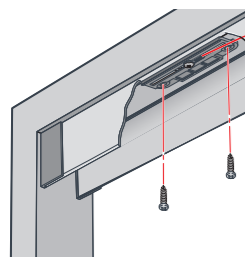
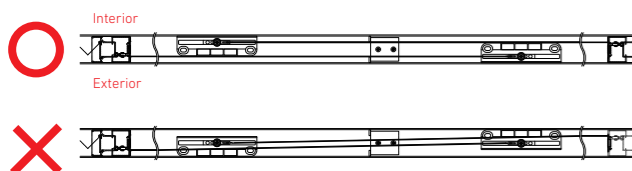


STEP 9

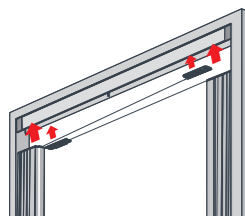
9.1 Peel the non-adhesive side of the double-sided tape on the thread regulator.

9.2 Pull the regulator to adjust the threads between the caps and install the top rail whilst applying a little tension.

Note: the threads should run parallel to each other, as shown in the following image.

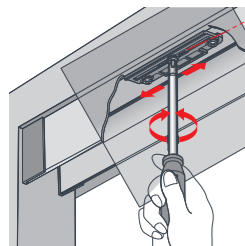


9.3 The fixing screws ensure the correct position of the thread regulator on the profile.

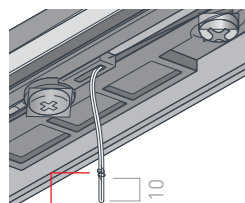


9.4 Install the second pleated mosquito screen unit above the thread regulator.

Note: Warning! Install the thread regulator in the correct direction.



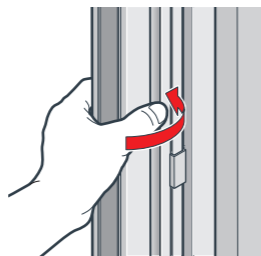
Note: Adjust the thread tension in the middle of the regulator. Please note that too much thread tension can cause the screen to malfunction.



Note: make sure that the thread regulator is not installed in the upper rail screw. If this is the case and you cannot avoid it, cut the thread and make a double knot leaving about 10 mm at the end of the thread as shown in this image.

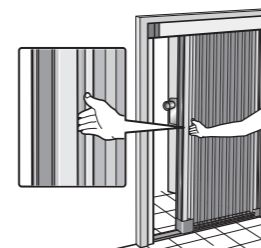
Knot thread

HOW TO OPERATE



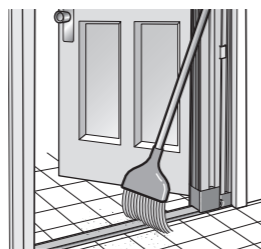
Turn the sliding profile slightly until the hook is released. Hold the sliding profile with your hands in the middle.

Note: do not hold it at the top or bottom for operation as this may damage it.



Note: do not add any parts such as the handle, etc., to the product with screws, as this may damage the opening and closing operation.

HOW TO CLEAN



STEP 1

CLEANING OF THE FIXED LOWER GUIDE

Cleaning stones, sand, dirt, mud, etc. accumulated on or around the bottom guide may cause more friction or damage to the screen parts and may affect proper operation.

SYSTEM

Warning: follow the warnings or you could cause fire, serious injury or even death.

STEP 1 Do not place heaters near or on the mosquito screen as fire may result.

STEP 2 Do not lean on or push the mosquito screen hard or lean a heavy object against it, as it may come off and fall, or you may fall.

STEP 3 Storing or removing the mosquito screen towards the folded mesh profile on a windy day it can cause falls or any injury.

Note: follow the overviews or you may cause injury or damage to household items around the screen.

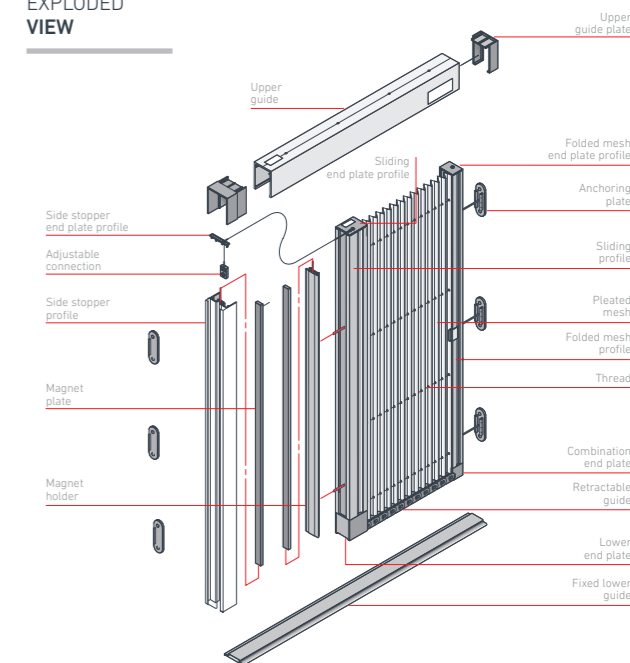
STEP 1 Do not disassemble or alter the screen or its parts. Do not use spray lubricants etc. as sand or mud will stick to the screen and may damage it.

STEP 2 Check to see if the screen is completely retracted into the folded mesh profile when folded, or irregular lines or deformations can occur that can cause damage to the screen.

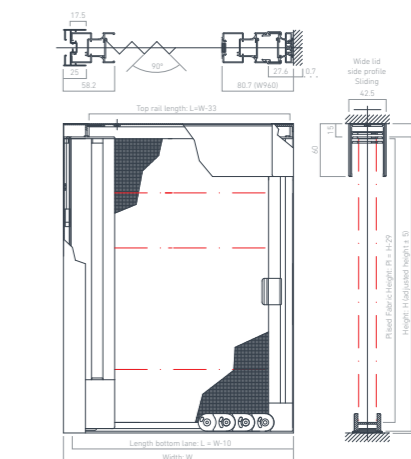


PLEATED MOSQUITO SCREEN 27 ADAPTABLE ASSEMBLY MANUAL

EXPLODED VIEW

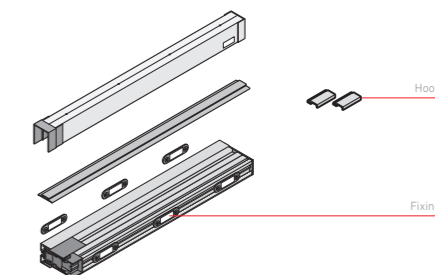


DIMENSIONS



PACKAGE CONTENTS

- Upper guide 1
- Lower guide 1
- Mosquito screen unit (assembly) 1
- Instructions 1
- Kit bag: screws, fixings, plugs and hooks

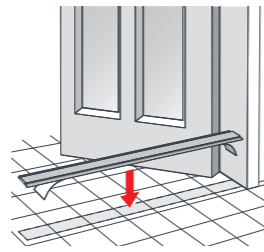
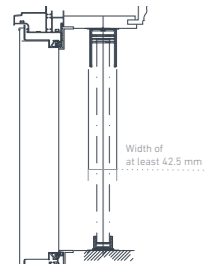


STEP 1

CONFIRM INSTALLATION POSITION

Check the correct position of the product before assembly:

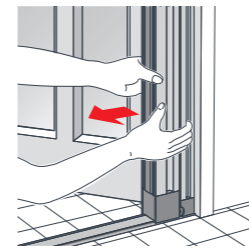
- 1.1 Check that it is level and the installation space is at least 42.5 mm.
- 1.2 Check that the door handle does not interfere with the installed panel.
- 1.3 Check that the 4 angles are correct so that the shape remains parallel.



4.2 Remove the white tape from the double-sided tape and press it to the ground strongly in line with the marked line. Be sure to press it toward the side of the folded mesh profile and make sure that there is more than 7.5 mm of space on each side of the side guide.

Note: if you place the double-sided tape incorrectly once and peel it off to reattach it, the tape will break down and not stick well. Therefore, please stick it correctly into the marked position.

It is necessary to wait 24 hours for it to adhere effectively enough.

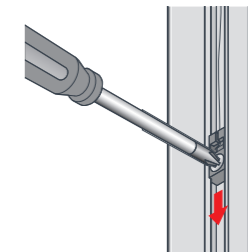


STEP 6

SCREW ON THE ANCHOR PLATE

Note: If the installation surface has a coated finish and the double-sided tape does not adhere very well to the surface, please refer to the installation method in point 9. In case of cladded finish, proceed with installation.

6.1 Hold the folded mesh profile of the mosquito screen with your hands and pull towards the side guide to separate it from the structure. It's easier to separate it from the bottom. Position the mosquito screen along the side guide.



STEP 8

CABLE ADJUSTMENT

8.1 Loosen the screw on the adjustable coupler a little so that it can move up and down. Move the adjustable hook down so that the wire (which can be seen through the inside of the top guide) loosens.

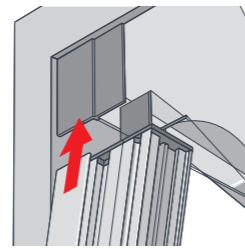
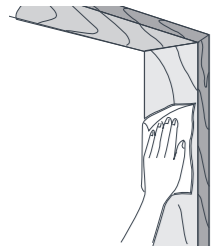
Note: do not pull the cable too hard, as the opening and closing operation will become stiff.

8.2 Tighten the screw on the adjusting hook and fix the correct position.

STEP 2

CLEAN THE INSTALLATION SURFACES

Wipe off any residue of oil, dust, water and sand from the installation surface and floor, and then wipe these surfaces with a dry cloth to ensure that the product is installed correctly.

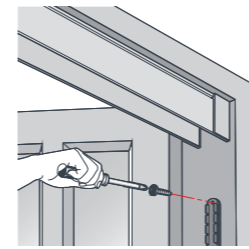


STEP 5

INSTALLATION OF THE MODULE WITH THE MESH AND LATERAL GUIDE

5.1 Check the top of the product with the UP-SIDE mark on the guide (after cutting, this mark disappears, so check the top).

Note: the mosquito screen and the guide are connected by cable so the installation must be carried out without removing the cable.



6.2 Screw the anchor plates firmly with the screws as they are only temporarily stuck with the double-sided tape.

Note do not screw in too tightly, as this could damage the plate.

Do not use an electric screwdriver either.

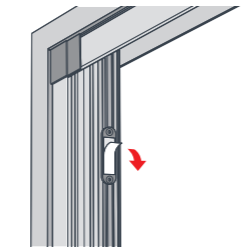
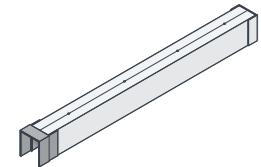


STEP 3

INSTALLATION OF THE UPPER GUIDE

Confirm that the ends of the upper guide are already fixed and that they are sufficiently inserted.

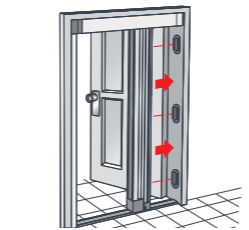
The largest end plate must be on the side of the side stop profile.



5.2 Insert the mosquito screen and the side guide (joined together with the magnet) into the top guide. The side guide should be inserted into the opening in the largest end of the top guide and the bottom of the screen should be placed over the lower fixed guide.

5.3 Remove the white tape from the fixing.

5.4 Separate the mosquito screen from the side guide.



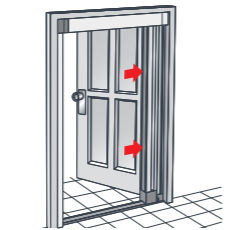
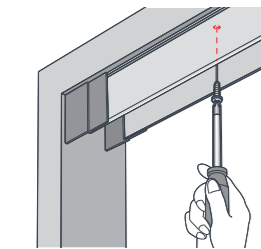
6.3 Please continue as above.

It is easy to tighten and hook the screen along the small projections of the anchor plates.

3.2 Fasten the upper guide with the screws.

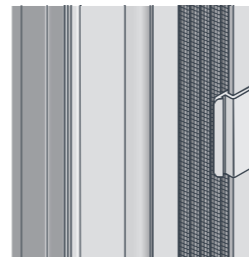
Note do not screw too tightly as it will deform the upper guide.

Tighten the end plates to each edge so that there is no space in them.



5.5 Push the screen with the anchor plate to the installation position (folded mesh profile) strongly so that the anchor plate adheres well to the bottom of the screen touching the bottom guide.

Note the mosquito screen must not come out of the fixed lower guide. Do not open and close until installation is complete. It may damage its operation.



STEP 7

INSTALLATION OF THE ANCHORING

7.1 Peel off the white tape from the double-sided tape (at the back of the anchoring, hook it into A in the folded mesh profile and push B to fix it to the folded mesh profile. Stick 2 pieces of the anchoring in a good position on both parts of the profile.



7.2 When the screen is closed, the anchorage is hooked into the sliding bar and the sliding bar is withdrawn firmly towards the folded mesh profile.



STEP 4

INSTALLATION OF THE FIXED LOWER GUIDE

4.1 Make a line on the floor (installation position) where the guide is to be installed.

Note the upper and lower guides must be aligned with the same centre. If set incorrectly it may affect the opening and closing function.

