

Technical Manual

Wind Screen 85, 105 & 125 Solar



Index

1. General recommendations regarding safety, use and restrictions	4
2. Installation instructions	5
2.1 On-site installation	5
2.2 Installation on pergola	8
2.3 Solar panel installation	11
3. Wind resistance (EN 1359)	11
4. Maintenance	12
4.1 Cleaning and care.....	12
5. Resolving problems	12
5.1 What to do in case of emergency.....	12
6. Motor programming	13
6.1 Motor configuration	13
Anexo I Disassembly and disposal of the packaging and components of the product at the end of its useful life	16

Important

It is important to read these instructions carefully before installation, operation, repair or first use, in order to protect the safety of persons and to the integrity of the product.

1. General recommendations regarding safety. Use and restrictions

In order to ensure the safe assembly, use and maintenance of this product, a number of precautionary measures must be taken. Please observe the following warnings and instructions, for the safety of all concerned. Please contact your distributor with any queries.

- This manual is intended as a reference for experienced professionals and should therefore not be used by DIY amateurs or trainee fitters.

- This manual describes the installation of the product assembly COMPONENTS, and refers to the electrical control installation manuals. If necessary, this manual should be supplemented with instructions for any additional COMPONENTS not described herein.

- Please read this manual carefully before starting work.

- Some COMPONENTS may be sharp or have jagged edges. It is therefore advisable to wear safety gloves.

- All parts supplied have been designed specifically for this product. The replacement or addition of other parts may have a negative effect on the safety of the product and its warranty. In addition, the CE certification of this product will become invalid if any parts are replaced or if the installation is not carried out in accordance with the instructions in this manual. The installer shall accept full responsibility in this regard.

- Ensure that the assembly area is sufficiently illuminated. Remove any obstacles or dirt. Make sure nobody is present besides the fitters. Unauthorised persons (especially children!) may interfere or cause hazards during installation.

Before assembly, it is very IMPORTANT for your safety and that of the product to follow all the recommendations listed below. A poor-quality installation may cause harm to people or damage to the installation itself.

Once the product has been unpacked, the professional fitter has to check its integrity. Before starting the installation, the arrangement of all components and tools must be checked in order to install the product correctly. In case of doubt, contact **Saxun** 's technical department.

Under no circumstances should a damaged product be installed, as it may damage the equipment and create situations that are dangerous for people.

These **systems are exclusively intended for the use for which they were designed**. Any other use is inappropriate, and therefore dangerous.

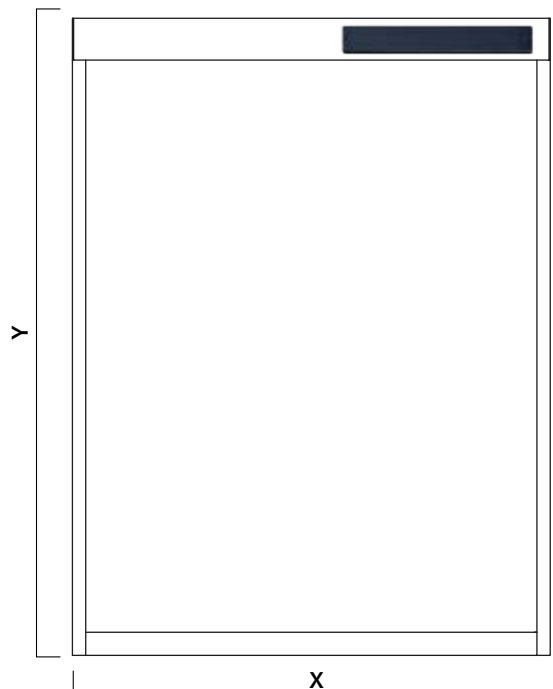
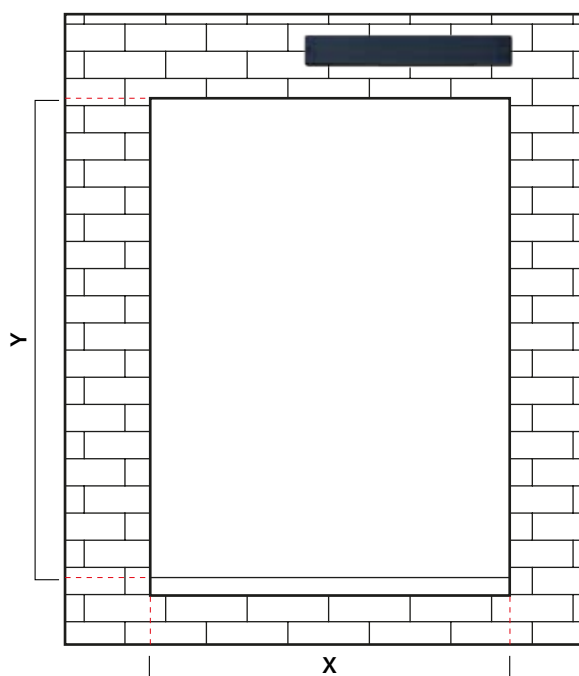
The system installation must always be performed by a professional fitter, respecting the manufacturer 's indications, as well as knowing and applying all the regulations in force.

Should any damage and/or a system malfunction be detected, **do not continue** with the installation.

The manufacturer will not be liable for damage caused during the installation due to non-compliance with these recommendations.

2. Installation instructions

2.1 On-site installation

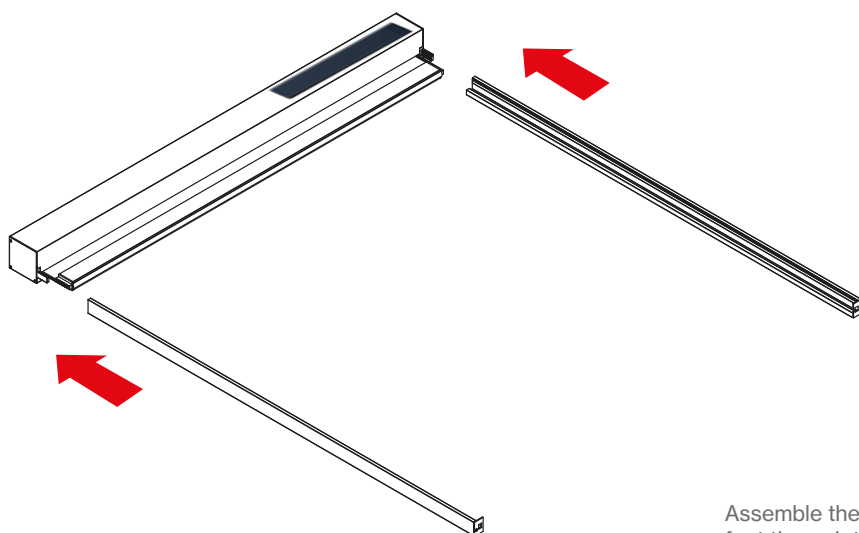


Verify the dimensions of the installation place.

X = Width total (mm)
Y = Height total (mm)

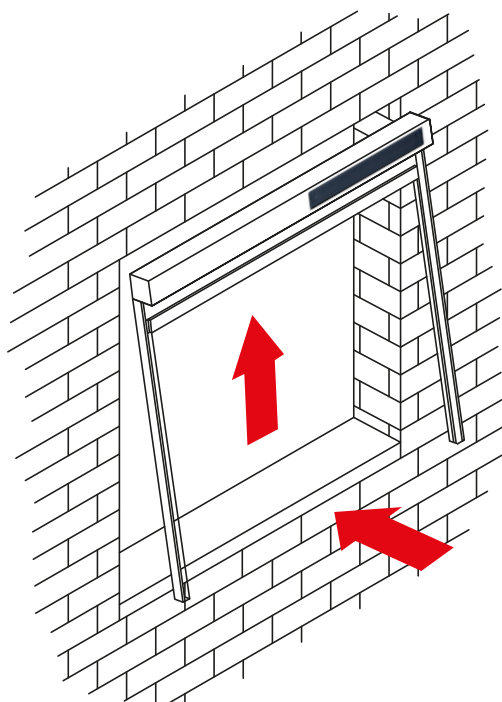
Check the dimensions of the product before installation. Verify that they are correct.

X = Width total (mm)
Y = Height total (mm)

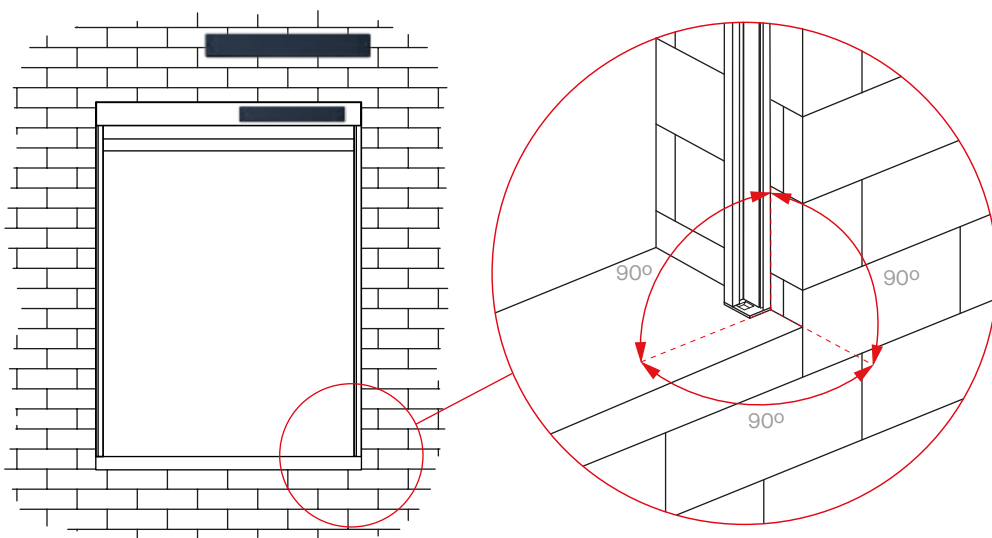


Assemble the box with the rear guides. Insert the end cap foot through the housing in the rear guide.

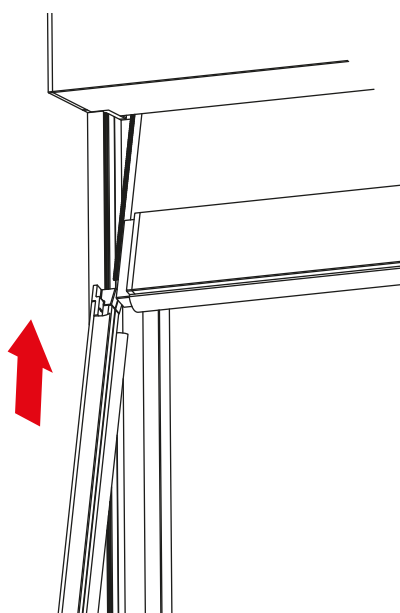
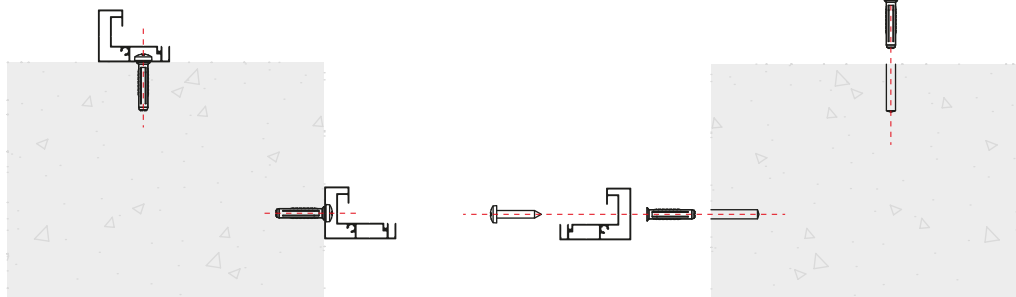
Position the product in the place where it is going to be installed.



Check that the product is correctly levelled and square in all positions. The solar panel can then be installed on the façade or on the box.

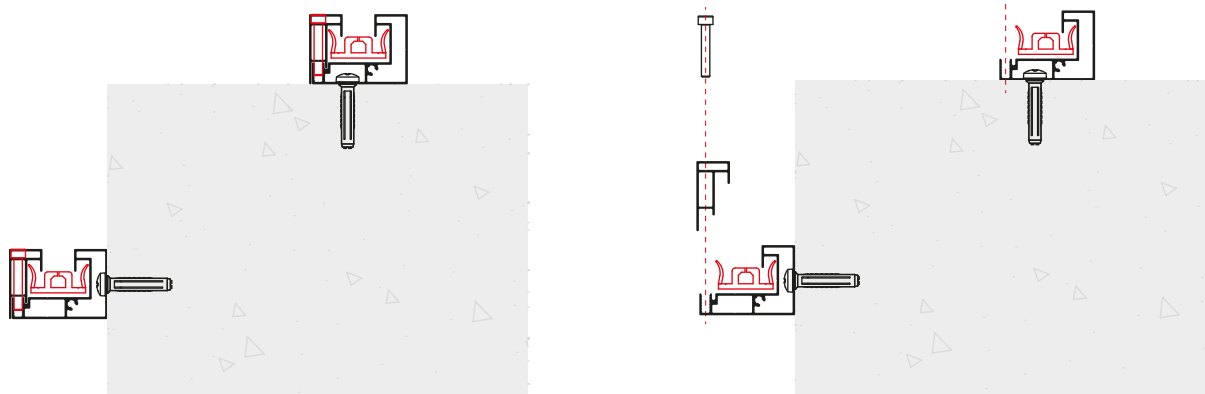


Fasten the systems through the guides. Take into account the type of wall when choosing the anchoring system.

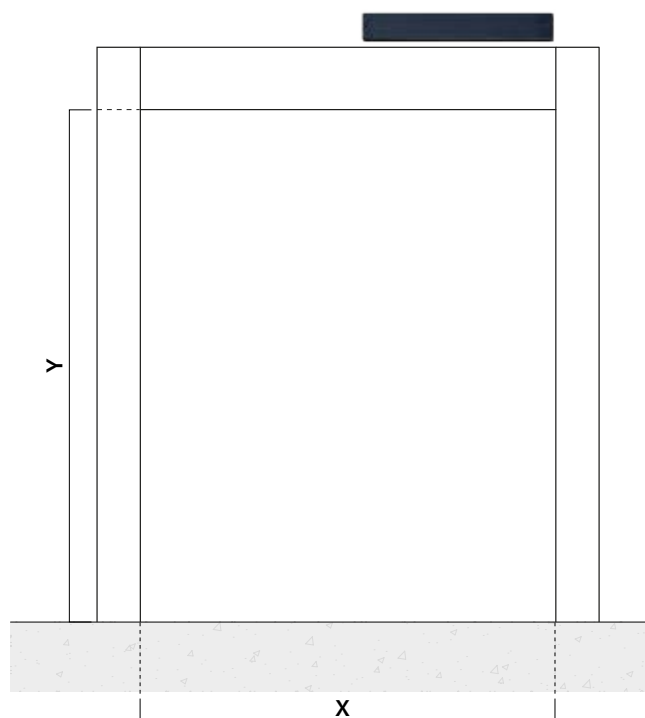


Insert the rack profile through the PVC 26x13.50 mm guide and position it on the rear guiding profile.

To finish the installation, join the two parts of the aluminium guide using screws DIN 912 A2 M4x25 mm. The rear guide with the front guide.

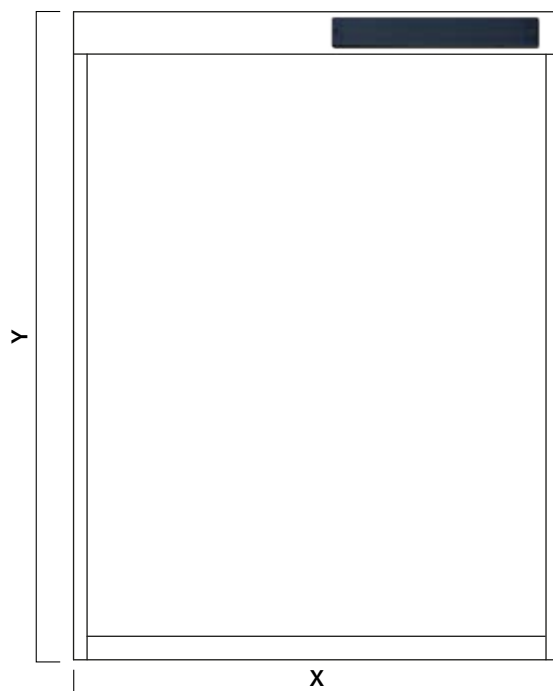


2.2 Installation on pergola



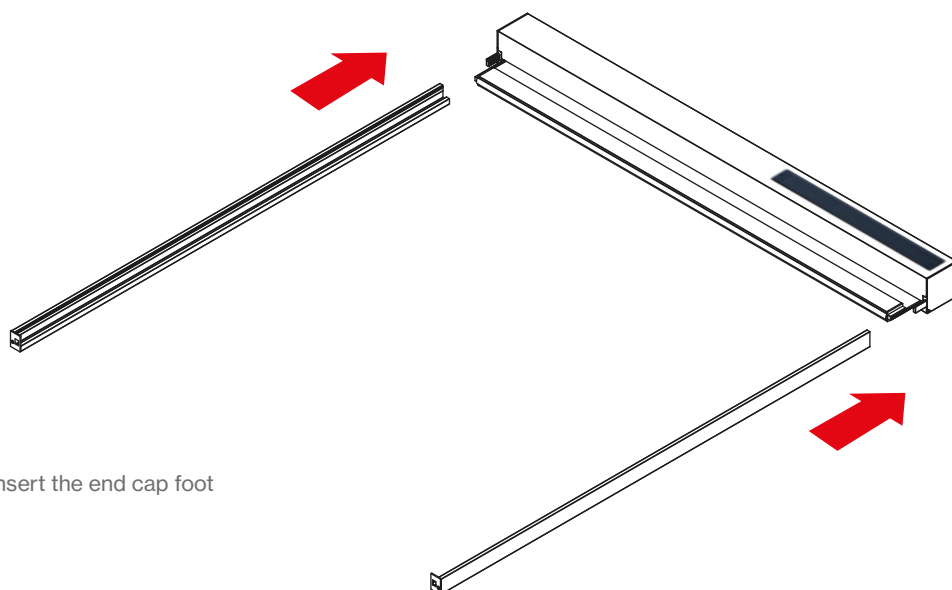
Verify the dimensions of the pergola side where it is going to be installed.

X = Total width (mm)
Y = Total height (mm)



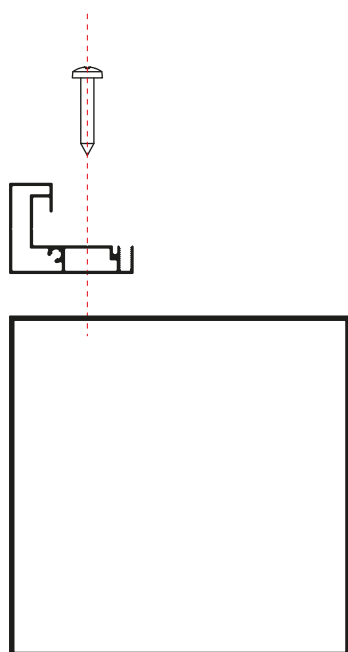
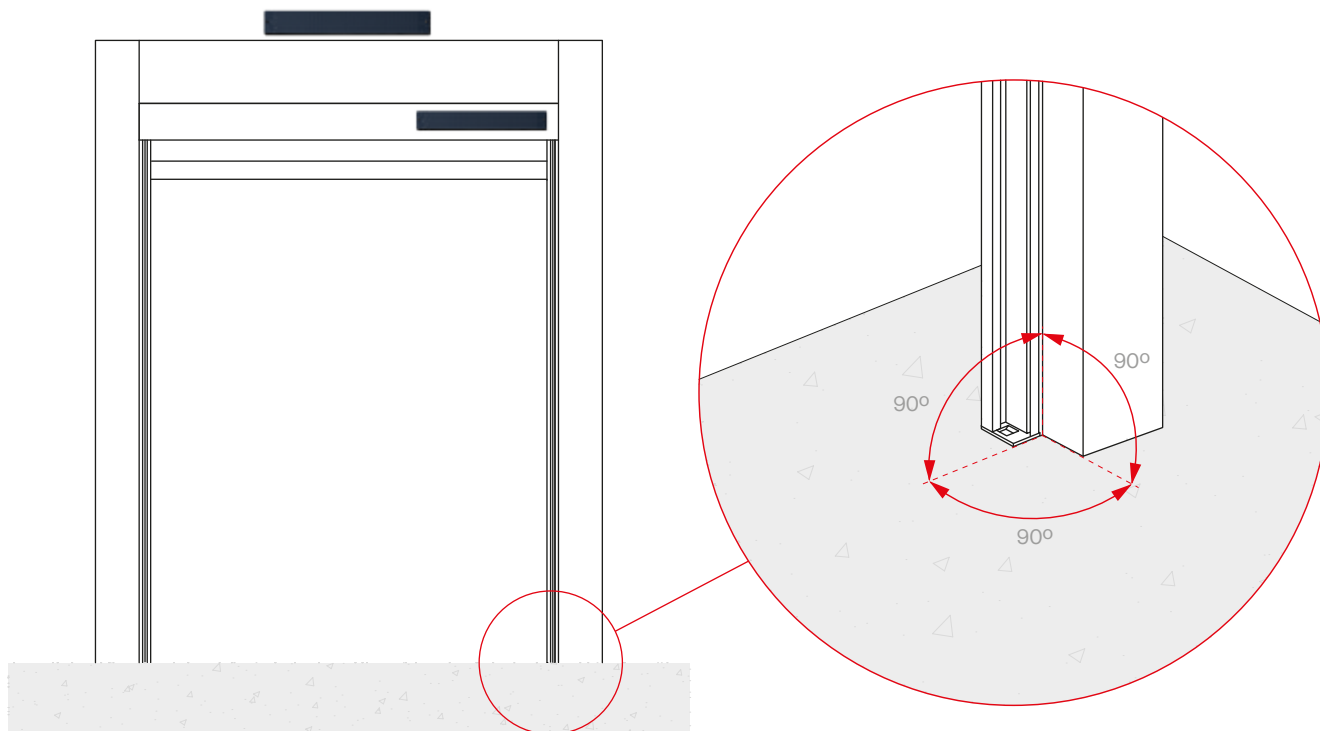
Check the dimensions of the product before installation. Verify that they are correct.

X = Total width (mm)
Y = Total height (mm)

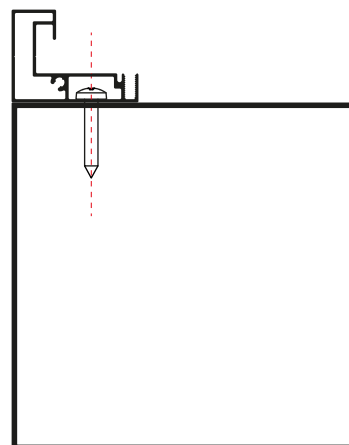


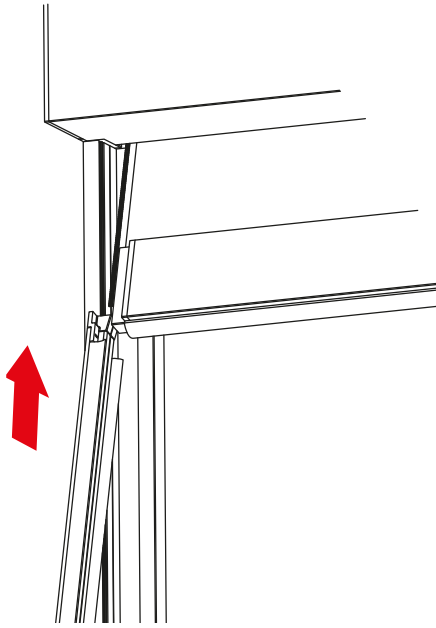
Assemble the box with the rear guides. Insert the end cap foot through the housing in the rear guide.

Check that the product is correctly levelled and square in all positions. The solar panel can then be installed on the pergola or on the box.



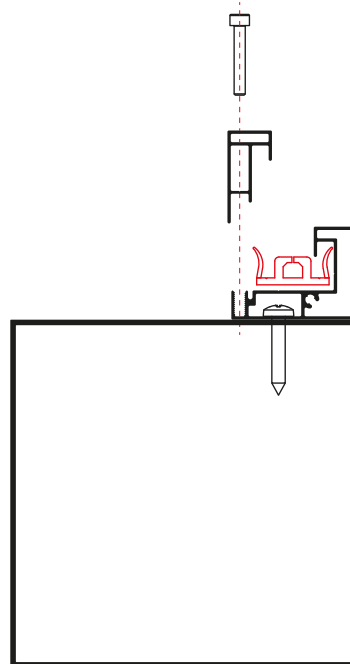
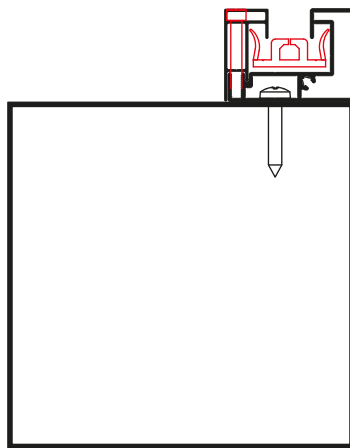
Fasten the systems through the guides. For an installation on a pergola it is recommended to use self-tapping screws.





Insert the rack profile through the PVC 26x13.50 mm guide and position it on the rear guiding profile.

To finish the installation, join the two parts of the aluminium guide using screws DIN 912 A2 M4x25 mm. The rear guide with the front guide.



2.3 Solar panel installation

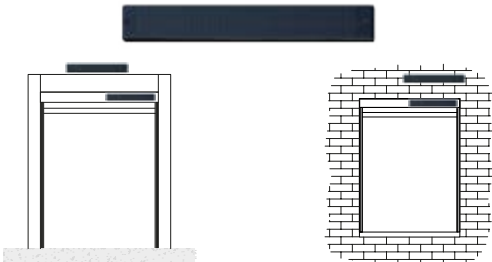
The solar panel can be installed either in the box or where the sunlight is most direct. The fastening can be done either with the included adhesive stickers or with two screws.

The connection of the solar panel to the motor can be done in two ways:

1. With the connector that has the Wind Screen housed in the cap, making a hole in the box or the opening plate that can be accessed from the outside. For this purpose, it has two nuts with a plastic cap to cover the connector. This would be to connect the solar panel to the outlet housed in the box.

2. A hole can be drilled between the opening plate and the cap to insert the solar panel cable and leave the connection inside the box.

A charger can be provided as an option so that the motor can be charged in the event that the battery runs out.



3. Wind resistance (EN 1359)

Classes	V-0	V-1	V-2	V-3	V-4	V-5	V-6
Nominal pressure test pa (N/m ²)	<50	50	70	100	170	270	400
Safety pressure 1,5 pa (N/m ²)	<75	75	100	150	250	400	600
Nominal speed (km/h)	<33	≈ 33	≈ 38	≈ 46	≈ 60	≈ 76	≈ 92
Safe speed (km/h)	<40	≈ 40	≈ 46	≈ 56	≈ 78	≈ 92	≈ 112

Classes	Height m	Width m	Class
Test result	3,50 m	4,00	V-5
	3,50 m	4,00	V-5

4. Maintenance

4.1 Cleaning and care

For best use and extended durability of the screen, it is recommended to carry out regular maintenance and checks at least once a year, or even more often depending on the wear and tear caused by wind at the installation site.

To prevent rusting, periodic cleaning of gutters and profiles using neutral soap is recommended. This should be done at least once a year and more frequently for materials exposed to aggressive atmospheric conditions (marine, industrial, airborne dust, etc.) It is important to thoroughly rinse the products with water after using detergents to clean them, to avoid the build-up of salts on the profiles' surfaces.

This periodic cleaning, if done correctly, removes exogenous agents from the material's surface that may attack their covering and aluminium components, prolonging the lifespan of the profiles and maintaining their appealing aesthetic.

To clean the canvas, we recommend removing the dust that has accumulated without using water, to enable you to remove all the surface particles by vacuuming, air blowing, beating or brushing.

If you wish to remove finger or grease marks, use water with neutral soap. If they are water-based marks, clean them with at most a sponge and rub with a damp cloth.

NEVER use detergents or other chemical products.

Finally, the user must bear in mind the need to check the tightness of the screws in accordance with the tightening torques.

5. Resolving problems

5.1 What to do in case of emergency

Problem	Causes	Solutions
The fabric moves to one side	Badly levelled screen	Level correctly
The terminal does not lower	Thermal motor protection	Insert the guides correctly

6. Motor programming

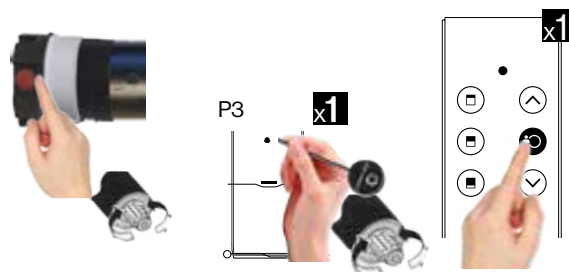
6.1 Motor configuration

The motor has the limit switches adjusted and the transmitter assigned. To begin with, remove the protective plastic from the battery and then you can use the product.



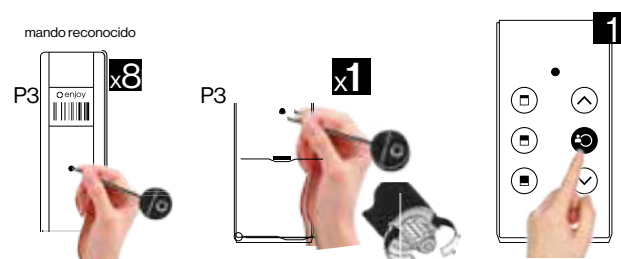
1. Pre-registration of the command point

Press the button on the head of the motor, which will make a movement. Then press once on the back of the transmitter and it will make a movement again. Finally, press the central button on the transmitter, to link the transmitter to the motor.



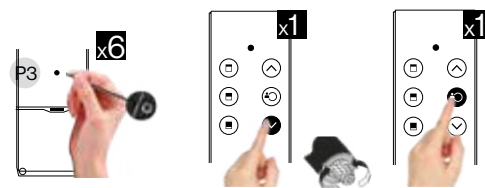
2. Copying transmitters

Press on the back of the old transmitter 8 times and then press once on the back of the new transmitter. This will cause the motor to make one movement. Then press the central button of the new transmitter. The transmitter will then be copied.



3. Motor rotation direction check

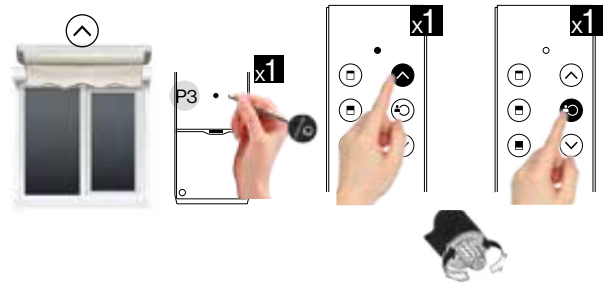
Select the channel corresponding to the motor to be controlled. Press the P3 programming button 6 times, then press the down button once. The motor confirms that it has reversed rotation with a double movement. Press the stop button to end the programming.



4. Setting the limit switches

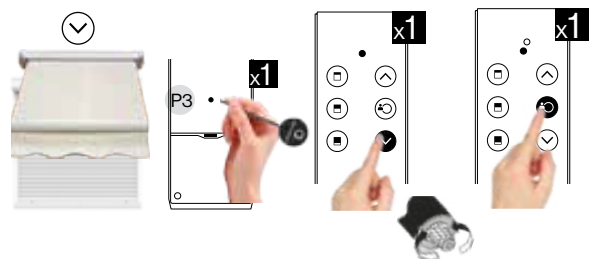
Upper limit switch setting.

1. Move the Wind Screen to the desired upper limit switch position.
2. Once in place, press once on the back of the transmitter.
3. Then press the up button on the transmitter and the motor will confirm with a double up and down movement.
4. Finally, press the button in the centre of the transmitter to close and lock the upper limit switch.

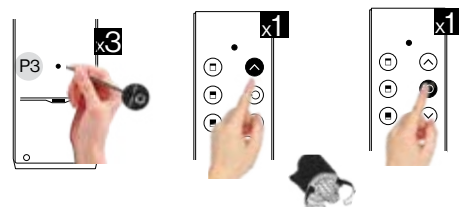


Lower limit switch setting.

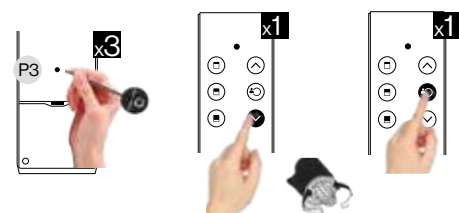
1. Move the Wind Screen to the desired position of the lower limit switch.
2. Once in place, press once on the back of the transmitter.
3. Then press the down button on the transmitter and the motor will confirm with a double up and down movement.
4. Finally, press the button in the centre of the transmitter to close and lock the lower limit switch.



SUPERIOR



INFERIOR



Cancelling the limit switches.

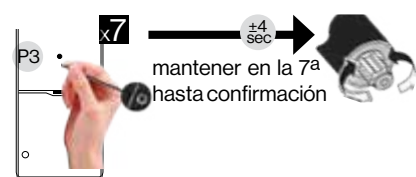
You can cancel any limit switch in the same way as configuring them, but by pressing three times behind the transmitter instead of once.

To adjust the limit switch, carry out the steps in point 4.

Total deletion of the motor.

To do a total reset:

1. Select the channel corresponding to the motor to be controlled.
2. Press the back button on the transmitter 7 times at short intervals, holding down the 7th time for +- 5 seconds. The motor will confirm total deletion with a double movement.



5. Datos técnicos

Radio coding	Rolling Code	Rolling Code
Radio Frequency	433.92MHz	433.92MHz
Protection Index	IP44	IP44
Rated Torque	5 Nm	10 Nm
Speed	28 RPM	14 RPM
Nominal Consumption	42W	36W
Nominal Voltage	11,1V	11,1V
Nominal Current	3,5A	3,0A
Protection Index	IP44	IP44
Limit swithc capability	∞	∞
Nominal capacity	250mAh	250mAh
Battery Fully charged by charger	4 hours	4 hours
Battery fully charged by solar panel	30000 Lux - 72 hours	30000 Lux - 72 hours
Working temperature	20° up to + 70° Celsius	20° up to + 70° Celsius

Disassembly and disposal of the packaging and components of the product at the end of its useful life

Disposal of packaging

Important

The packaging must be recycled by the authorised professional who installed the product.

We advise you to recycle the product packaging responsibly:

- Please dispose of this waste in accordance with the current regulations:
 - Directive 94/62/EC on packaging and packaging waste.
 - Spanish Law 11/1997 of April 24th on packaging and packaging waste.
- Please sort the waste by separating each and every one of the various materials, to facilitate effective disposal of the packaging.
- Do not dispose of packaging materials together with other types of waste. Take them to a packaging materials collection point designated by the local authorities.
- In order to minimise the environmental impact of packaging and packaging waste, it is necessary to define the composition and nature of the packaging of our products to recommend their best disposal.

Paper and cardboard:

In waste management, the recycling of paper and cardboard plays an important role, because up to 70% can be reclaimed. The disposal of paper and cardboard can be done through various channels such as collection by private operators or delivery to waste treatment plants.

Plastic:

The recycling of plastics has many advantages for the environment and therefore benefits the quality of life of everyone, contributing to a greater saving of raw materials as well as natural, energy producing and economic resources. The disposal of plastic can be done by private operators or delivered to waste treatment plants.

Bubble wrap:

This is made of low density poly-ethylene, which makes it 100 % recyclable. For optimal disposal, please deliver any waste comprising this material to plastic waste treatment plants.

Our commitment to the environment

One of **Saxun's** objectives is to maintain socially responsible behaviour. This commitment to the environment implies continuous improvements in the measures that are adopted to combat climate change.

Promoting responsible care of the environment, complying with the legal and regulatory requirements applicable to our products and promoting energy saving in all our projects are measures that are essential for us to achieve our objectives.

Disassembly and removal of the product

Important

The disassembly of the product at the end of its useful life must be carried out by qualified personnel, and in order to carry it out, the reverse steps that were carried out for its assembly must be performed.

When disassembling this product, a number of precautionary measures must be taken. Observe the following warnings and instructions. Please contact your supplier with any queries.

Disassembly may only be carried out by experienced fitters. This manual is not intended for DIY enthusiasts or installers in training.

For more information on these disassembly instructions, please refer to the chapters regarding installation in this manual that contain diagrams and detailed information.



Warning

Always act with care. Use appropriate tools which are in perfect condition.

• Step 1

Raise the Wind Screen to its upper limit switch position.

• Step 2

Loosen and remove the screws that fix the two parts of the aluminium guide, the rear guide with the front guide.

• Step 3

Remove the front guides.

• Step 4

Remove the rack and pinion profiles from the guides.

• Step 5

Loosen and remove the screws that fix the guides to the wall.

• Step 6

Uncouple and remove the box guides.

• Step 7

Loosen the screws that fix the lower guide covers to the guides, and remove the covers.

• Step 8

Uncouple the opening side from the box.

• Step 9

Loosen and remove the screws that fix the end plates to the box.

• Step 10

Loosen and remove the screws that fix the bracket and the pivot bracket to the end plates.

• Step 11

Uncouple the roller tube.

• Step 12

Remove the mat from the box profile.

• Step 13

Remove the opening capsule, the motor and the motor capsule from the roller tube.

• Step 14

Loosen the screws securing the terminal caps to the terminal and remove the caps.

• Step 15

Remove the plates from the inside of the terminal profile.

• Step 16

Remove the foam from the terminal profile.

• Step 17

Loosen and remove the screws and studs securing the canvas to the terminal profile and uncouple the profile from the canvas.

• Step 18

Finally, loosen and remove the screws and studs that fix the canvas to the roller tube and remove the canvas.



Attention

Make sure that you dispose of all the product's parts according to the nature of the material.

Components	Galvanised Steel	Stainless Steel	Aluminium	WEEE	Plastic	Textile
Profiles			•			
Screws		•				
End caps	•					
End cap plates					•	
Rack and pinion guide profile and rubber foam					•	
Wind Screen guide terminal kit					•	
Axle	•					
Caps	•				•	
Motor		•		•	•	
Motor supports		•	•			
Loading bar caps					•	
Terminal plate	•					
Canvas						•

Our products are mainly made of recyclable materials. It is advisable to be informed about the recycling or disposal systems provided for in the current regulations in your country for this product category.

Important

Always act with care. Please only use suitable tools that are in perfect condition.



This symbol means that the product must not be disposed of together with household waste as it must be collected separately for recovery, reuse or recycling in accordance with local regulations.



In compliance with European Directive 2012/19/EU, waste electrical and electronic equipment (WEEE) can become a serious environmental problem if not managed properly. The Directive provides the general framework valid throughout the European Union for the disposal and re-use of waste electrical and electronic equipment.

At the end of the service life of the electrical or electronic equipment, it must not be thrown away together with other types of waste. They can be delivered to the specific centres regulated for this purpose by the local authorities.

The effective separation of waste will avoid negative consequences for the environment and health that could result from poor waste management or inadequate waste disposal.

Important

By complying with this directive, you will be acting in favour of the environment and will contribute to the conservation of natural resources and the protection of health.

Local regulations may impose significant penalties for illegal disposal of the product.

The materials that our products are made of offer a great variety of environmental advantages



Galvanised steel

Galvanised steel is a type of steel which undergoes a certain treatment, at the end of which it is coated with several layers of zinc which protect it, avoiding oxidation. The recycling of zinc helps reduce demand for new materials and as a result generates considerable energy savings, being a metal that constitutes a very valuable and sustainable resource.

For proper recycling of galvanised steel, it is advisable to visit a metal waste collection centre.



Stainless steel

Stainless steel is an iron alloy containing nickel and chromium to protect against corrosion and rust. Its qualities include resistance to high temperatures and being a particularly strong material. Stainless steel is an infinitely recyclable "green material". Its properties make it ideal for exposure to poor weather conditions.

Therefore, to ensure proper disposal of stainless steel, it is recommended that this material be left at a specialised waste collection centre.



Aluminium

Aluminium recycling guarantees an endless variety of environmental benefits. The use of recycle aluminium saves 95% of the energy used in its production in its raw state, and it can be recycled as many times as desired and is fully recoverable. Therefore, the recycling of aluminium is both technically and economically profitable.

Therefore, to ensure proper disposal of aluminium, it is recommended that this material be left at a specialised waste collection centre..



Cables

The recycling of electrical cables prevents the contamination that can come from these elements. Its re-cycling allows for the subsequent use of the copper, aluminium and brass from the cables, once they are separated from their plastic insulation.

Electrical and electronic waste must be taken to clean points for proper recycling



PET



HDPE



PVC



LDPE



PP



PS



Other

Plastic

Plastic recycling provides a sustainable source of raw material for the industry. Its reuse also significantly reduces environmental problems, as it is a non-biodegradable material.

Recycling reduces energy consumption and CO₂ emissions, thus mitigating pollution and climate change.

There are several types of plastic, so to achieve optimal recycling it is essential to deposit them in clean points where the separation of the different types and their identification will take place.



Textiles

The use of textile waste is essential when we talk about recycling. Reuse of such waste helps to reduce the consumption of water and the gases that are released in the manufacturing process.

In order to encourage the proper disposal of textiles, it is recommended that they be left at a specialised waste centre where the different textile fibres will be separated.

! Important

Follow the recommendations for effective product recycling.
Remember that recycling is more than an action; it is the value of accepting responsibility

MT WIND SCREEN 85, 105, 125 SOLAR · EN · 01 · 0424

saxun
by Giménez Ganga

Giménez Ganga, S.L.U.
Polígono Industrial El Castillo
C/ Roma, 4 • 03630
Sax (Alicante) • España

saxun.com