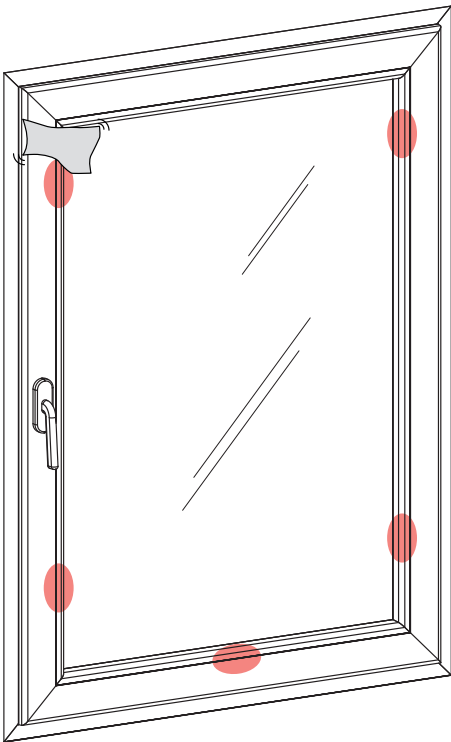


Warnings

Place the frame in the window opening, **without removing** the protective adhesive tape.

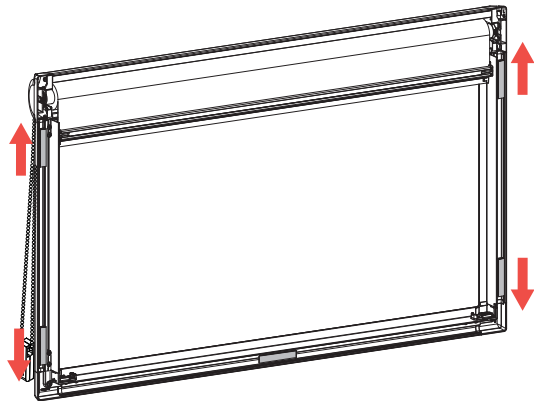
1. Clean the window

Clean the marked areas of the window with alcohol.



2. Adjust the supports

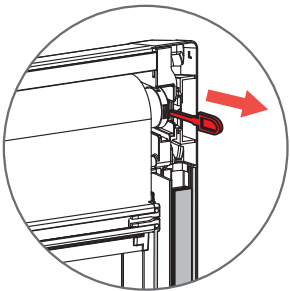
Then, adjust the clips to be as close as possible to the corners.



3. Remove the brake **Spring system**

Remove the spring lock that tensions the fabric.

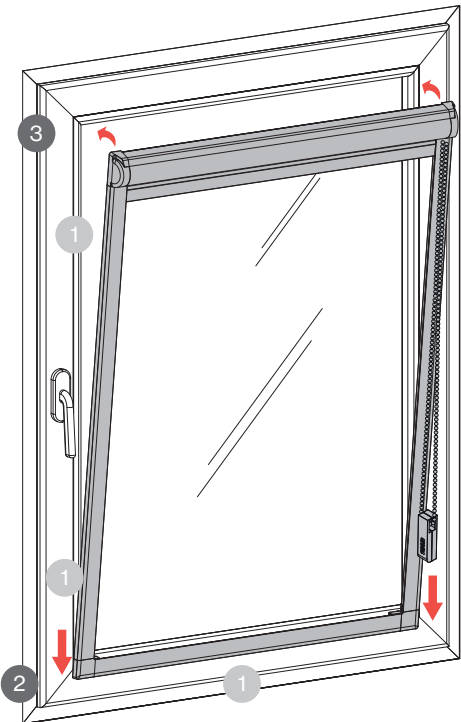
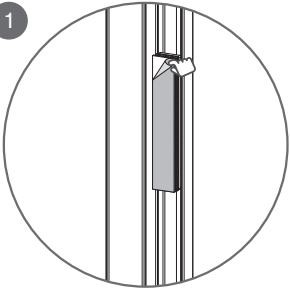
It is a red piece in one of the upper corners.



4. Install the product

Remove the protective adhesive tape.

Press each corner firmly against the window for 5 seconds, starting with the lower corners of the Stor



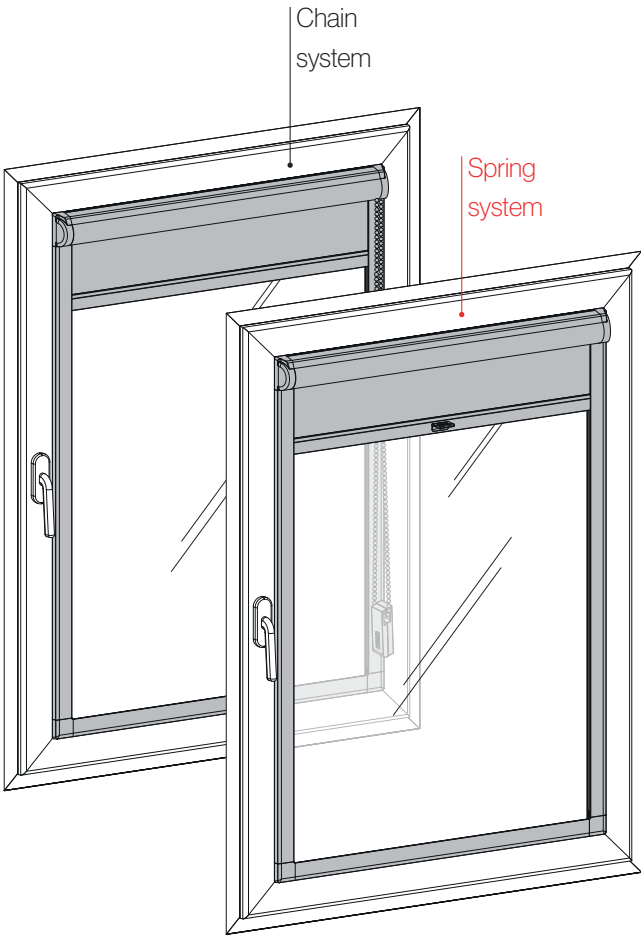
saxun[®]
by Giménez Ganga

Giménez Ganga, S.L.U.
Polígono Industrial El Castillo
C/ Roma, 4
03630 • Sax (Alicante) • España

saxun.com

saxun[®]
by Giménez Ganga

Assembly and installation manual
Stor Glass Avant



General recommendations regarding safety, use and restrictions

In order to ensure the safe assembly, use and maintenance of this product, a number of precautionary measures must be taken. Please observe the following warnings and instructions, for the safety of all concerned. If in doubt, contact your dealer.

Please read this manual carefully before starting work.

Some components may be sharp or have jagged edges. It is therefore advisable to wear safety gloves.

All parts supplied have been designed specifically for this product. The replacement or addition of other parts may have a negative effect on the safety of the product and its warranty.

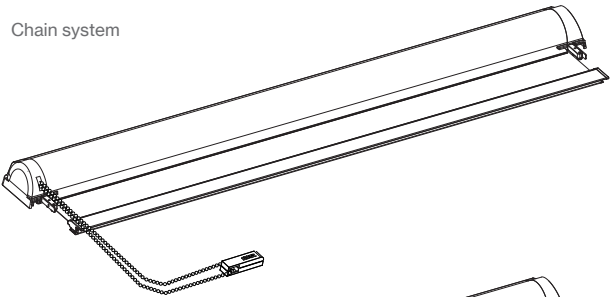
These systems are exclusively intended for the use for which they were designed. Any other use is inappropriate, and therefore dangerous.

The manufacturer will not be liable for damage caused during the installation due to non-compliance with these recommendations.

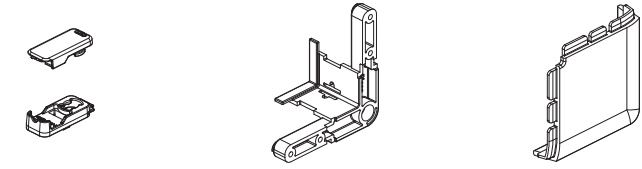
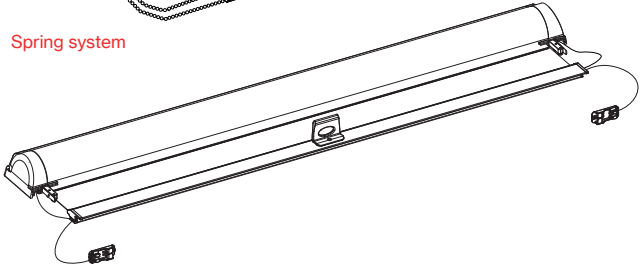
Under no circumstances should a damaged product be installed, as it may damage the equipment and create situations that are dangerous for people.

Componentes

Chain system



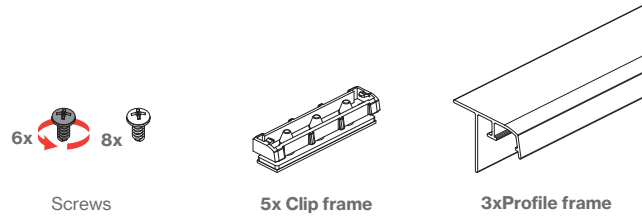
Spring system



2x Clip thread

2x Interior angle

2x Angle



Screws

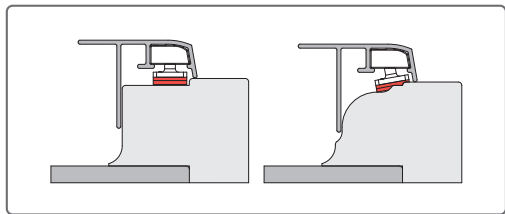
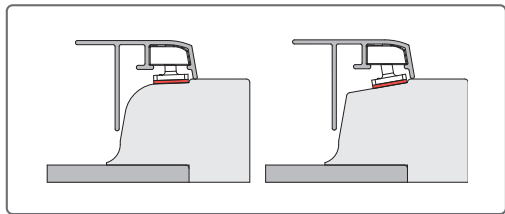
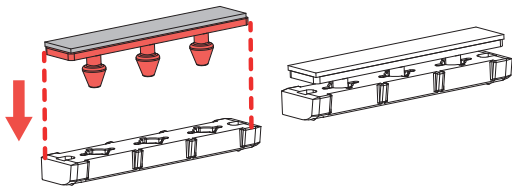
5x Clip frame

3xProfile frame

Product assembly

1. Clip profiles

Insert the piece with adhesive into the piece shown, applying pressure.



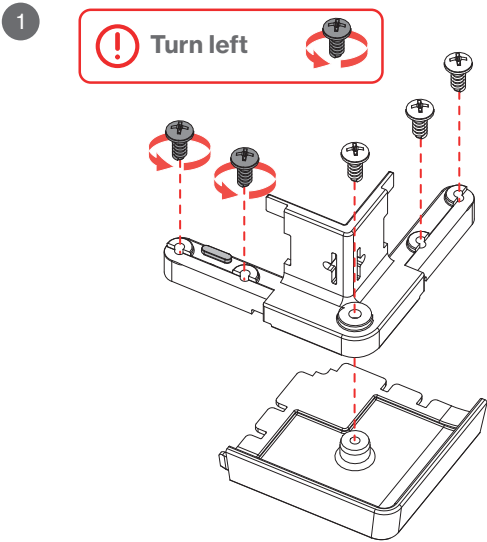
2. Bottom profile

2.1 Attach the interior angle to the angle.

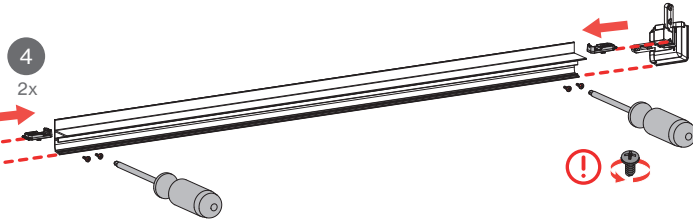
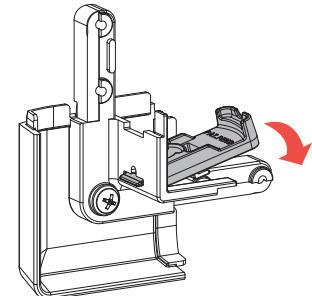
2.2 Place the shown half of the thread clip in position.

2.3 Insert two clips into the profile groove as shown, with the same dimensions in the two profiles, equivalent to the height of the window. And one in the remaining profile.

2.4 Place the angles at both ends and attach them to the uneven profile, using 4 normal screws and 2 left-hand screws.



2 Spring system

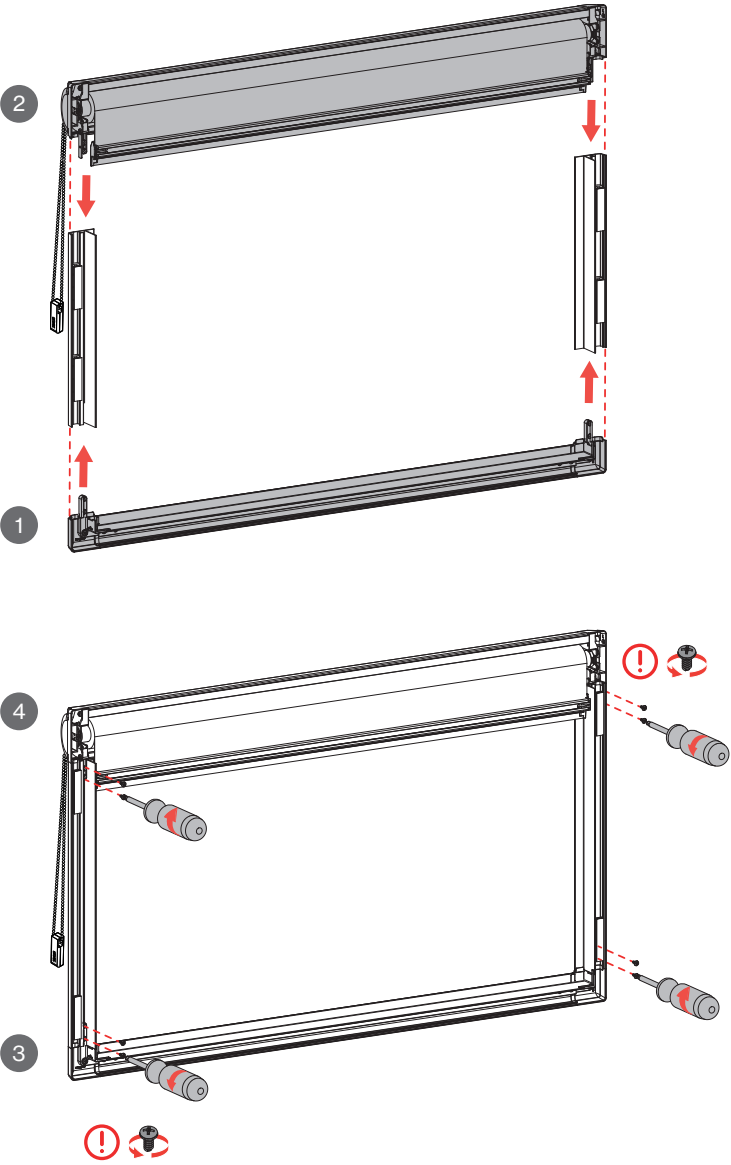


3. Product assembly

3.1 Position the lateral profiles, joining the previously assembled bottom profile to the Stor box.

3.2 Attach the assembly using the left-hand screws. Screw them diagonally into the angles.

3.3 Repeat the operation with the remaining screws.



4. Thread tension Spring system

Starting with side A

4.1 With the other half of the clip, clamp the thread

4.2 Place the clip perpendicular to the plane of the Stor. Rotate and hold the clip as shown.

4.3 Repeat the same process on side B, tightening the thread.

